

## PRESIDENT'S REPORT Our Inheritance, Our Challenges

By Jeff Hornstein, QVNA President

Looking back at Jeff Rush's final column in December's *Crier*, I am grateful for the enormous achievements of my predecessors. The past five years saw momentous challenges that were met in large part due to the leadership of the previous administration and its deep relationships to elected officials, civic leaders, and the community at large. QVNA helped to keep us casino-free, and made sure the Zoning Code and the Waterfront Master Plan met our neighborhood's needs. It served as a vehicle for important initiatives like the renovation of the Mario Lanza Park Dog Run, planting 200 new trees, an inventory of historic properties, the creation of a neighborhood conservation district, a great new website, and the revitalization of the so-called "Forgotten Blocks."

Thanks to outgoing president Jeff Rush, outgoing executive vice president Richard Wolk, outgoing recording secretary Kathy Dilonardo, and outgoing board members Ed Bell, Keith Grube, and Walt Lowthian for outstanding service to Queen Village. Due to their leadership and prudence, the QVNA that the new Board inherits is fiscally sound and well-respected as a force in civic life.

Yet we still face significant challenges and your new Board is ready to face them. In no particular order, here are some of the ideas that we have been kicking around.

**Schools:** We believe that every child deserves an excellent public education. While the Meredith School is renowned city-wide, the nearby Nebinger School has struggled. If "it takes a village to raise a school," our Village is well-positioned to help Nebinger achieve its potential. In collaboration with others, such as Bella Vista Town Watch, Old Pine Community Center, and Mother Bethel AME Church, QVNA can help to create a community support structure to aid Nebinger's dynamic principal, Dr. Ralph Burnley, and the emerging Friends of Nebinger group in

*Continued on page 2*

### QVNA Community Parking Lot

Only \$95 per month!

(Enter on Christian Street between Front and Columbus Blvd.)

Call 215 569-8400, ext 4660

January, 2012 • Volume 49, No. 1

## QUEEN VILLAGE Crier



Word for a New Year: "PARTICIPATE"

- In a meet-n-greet with Councilman Squilla
- In a fun, priority-setting exercise at the

**QVNA General Meeting**

**Thursday, January 19, 7:30 pm**

St. Philip Neri, 218 Queen Street

### On Monroe Street neighbors make a clean sweep

"I don't do that much. I just stick flyers in everyone's doors and put up the No Parking signs." So says Dorothy Daub-Grossman who is block captain for the 200 block of Monroe Street through the Streets Department's Philadelphia More Beautiful program. But it's precisely such simple gestures that make a big neighborhood difference.

On December 3rd, it brought about 15 of her neighbors out to sweep up and bag the last of the fall leaves. All told, they filled about 50 bags of leaves and put them in brown paper bags for the city's leaf recycling program. Walk down that block of Monroe now and what you won't see are sodden, slippery masses of leaves turning into goo along the curbs and at the corners, and clogging the culverts.

The sweep-up was not part of the Philadelphia More Beautiful scheduled cleanups, but when Dorothy sends out the request, her neighbors respond. Several Queen Villagers serve as block captains through Philadelphia More Beautiful, which organizes Philadelphia More Beautiful organizes three cleanups a year in each police district from March through August. If you are interested in volunteering for your block, call 215 685-3981.



### Nebinger goes green, wins big

Nebinger Elementary School (6th and Carpenter Streets) received a \$4,500 Picasso Project grant to engage 6th through 8th grade students in re-designing the school's play yard.

With this new grant from Public Citizens for Children and Youth (PCCY), Nebinger students will design a multimedia representation with science, social studies, math and literary stations that will be part of the final revitalization of the school grounds when the actual construction takes place. The Nebinger School

community had already initiated a sustainable environmental strategy, appropriately dubbed "Nebinger Goes Green," that began in 2010 with a Community Design Collaborative grant to re-envision the traditional blacktop school yard.

Nebinger, in partnership with the Fleisher Art Memorial, applied for one of the highly competitive grants, and Nebinger's was among 13 projects funded. The awards ceremony will take place on January 17 at the World Café Live where checks will be awarded.

### QUEEN VILLAGE NEIGHBORS ASSOCIATION

P.O. Box 63763, Philadelphia, PA 19147

phone 215-339-0975 • fax 215-701-4202 • email info@qvna.org • web: www.qvna.org

**Board of Directors:** Jeff Hornstein, *President*; Amy Shelanski, *Executive Vice-President*; Ted Warren, *Vice President*; and Bill Landy, *Treasurer*.

Brent Chavis, Mike Hauptman, Kim Maialetti, Rich Miller, and Honey Pertnoy.

**Emeritus Members:** Marian Buczek, Kathy Conway

#### Staff

Carla Puppini, *Executive Director*; Judy Mathe Foley, *Crier Editor*

THE CRIER IS PRINTED ON RECYCLED PAPER

realtors **plumer.**  
associates, inc.

**Michele Golembeski, R.N.**

Realtor Associate

Voicemail (215) 922-3600 Ext: 325

Cell: (215) 850-9227

E-Mail: mgrealtor@comcast.net

226 South Street • Philadelphia, PA 19147

215-922-4200 • Fax: 215-922-7774



Meeting your real estate needs with professional excellence!



**ESSENE**  
MARKET & CAFE

**Natural Foods**

719 S. Fourth Street  
Philadelphia, PA 19147

Prepared Foods to Go  
Vitamins & Cosmetics  
Frequent Shopper  
Discounts

Tel 215.922.1146  
FAX 215.922.5150

STATE INSPECTION

CERTIFIED  
EMISSIONS TESTING

**SUPERIOR AUTO CARE, INC.**



900 S. 2ND STREET  
215-271-1439

**PETER CUNDO**  
OWNER-OPERATOR  
CERTIFIED TECHNICIAN

COMPLETE SERVICE  
ON FOREIGN AND  
DOMESTIC CARS

**Patricia Bentz CPDT-KA, CDBC**  
Certified Dog Trainer & Canine Behavior Counselor

*"Going to the Dogs"*

**K-9 Training & Behavioral Therapy**

- One-on-One Obedience Training at Home
- Behavior Consultations
- K9 Nose Work®



Hours by Appointment (215) 551-5254 [www.k-9training.org](http://www.k-9training.org)

**Kathy Rush**  
Realtor®



**Prudential**

**Fox & Roach, REALTORS®**

Society Hill Home Marketing Center

530 Walnut Street, Suite 260, Phila., PA 19106

Office: 215-627-6005 Fax: 215-627-3142 Direct: 215-440-2051

Cell: 267-312-4561 E-Mail: krush2010@aol.com

An independently owned and operated member of The Prudential Real Estate Affiliates, Inc.



## **Inheritance, Challenges** *continued from page 1*

their efforts to make Nebinger a first-rate neighborhood school.

**Safe Streets:** The Philadelphia Police Department has made enormous strides toward making Queen Village one of our city's safest neighborhoods. Special thanks to the leadership of Lt. Bologna and the fine officers at the South Street Mini-Station. There is still work to be done on the southern and western ends of the neighborhood, in particular, to help residents feel safe and secure. We need to integrate all of our Queen Village neighbors into QVNA and make sure that there are "eyes and ears" on the street everywhere.

**Greening:** Our Sustainability Committee has identified several projects that could help make ours Philadelphia's "greenest" neighborhood. As it happens, QV has among the highest rates of bicycle commuting in the city, yet we lack infrastructure like bike racks and lanes. Without negatively impacting our difficult parking situation, we need to make our streets more welcoming to the growing group of cyclists among us.

In addition, there is much more that we could do as a neighborhood to mitigate Philadelphia's stormwater runoff problems and conserve energy.

**South Street** still faces tremendous challenges to re-gain its economic vitality. The South Street Headhouse District seems committed to working with the adjacent neighborhoods to figure out how those of us who live in the area can be enticed back to South Street to do our everyday shopping. While curbing nuisance bars and constructively channeling the energy of the youthful visitors who jam the sidewalks every weekend must remain a priority, it is equally critical to make a plan for the weekday hours.

**Community Center:** Although Friends of Weccacoe has ambitious plans to remake that playground and recreation center into a neighborhood community center, it will take much work to get it done. We will encourage our new Councilman, Mark Squilla, to support this First District project, and we will undoubtedly need to raise money and contribute sweat equity to make this plan a reality.

This is just a brief *precis* of some of the projects that your new leadership team would like to tackle. However, we will only be effective if our entire community gets involved. We are all busy people, but we all benefit from putting some time and energy into our neighborhood.

Thus, I invite you to GET INVOLVED. Come to the first General Meeting of 2012, to be held at at 7:30 pm, Thursday, January 19 at St Philip Neri Church. Two items will be on the agenda: a brief meet-n-greet with Councilman Squilla; and second, we will engage in a fun planning exercise where together we will set priorities for the next year.

In the meantime, or at any time, please feel free to reach out to me directly at [jeff.hornstein@gmail.com](mailto:jeff.hornstein@gmail.com) or 267-250-6480.

**Have something to say? Do it in the Crier.**  
**Submit your stories by mail or email, and make sure to include contact information.**

FROM CARLA PUPPIN  
QUEEN VILLAGE NEIGHBORS ASSOCIATION EXECUTIVE DIRECTOR

### Annual Queen Village Open House and Garden Tour: **Your house or garden, perhaps?**

It's January, so it's time to put out the feelers to Queen Village residents about the annual Open House Tour. Queen Village has participated in the tour for over 30 years. For most of those years, the Friends of Independence National Historical Park served as the umbrella organization for Open House Tours across the city. With the changing economy, the Friends pulled out a few years ago, but Queen Village, along with other long-established neighborhood organizations, continues to sponsor the Open House Tour as a way to celebrate the history, beauty, creativity, and charm of our neighborhoods.

#### **Why put your house (and/or garden) on the Queen Village Open House Tour?**

"It was an incentive for me to get several little projects done."

"It was fun!"

"I met so many nice people."

"The people who took the tours were so interested in the house, it made me appreciate it in a new light."

#### **Tourgoers' comments:**

"I met several of the owners who graciously explained the history of their home."

"Beautiful homes and charming owners—I got wonderful ideas for home décor."

"I really enjoyed the houses."

"I enjoyed that so many homeowners were on hand."

#### **Mark your calendar for May 19**

This year's Queen Village Open House Tour takes place from noon to 4 pm, Saturday, May 19. Are you interested in participating? Consider it! Lovingly restored or renovated, historic or contemporary, a charming patio or garden—all these make for a great house for the tour. It can be a trinity, a 19th or 20th century row home. The Queen Village tour is marked by diversity. It's an opportunity to show off your home (receive lots of compliments) and our neighborhood, and help the QVNA all at the same time. The tour is a fundraiser—tourgoers pay to take the tour—and all proceeds come back to our community. The committee provides housesitters, all neighbors in the community.

**Interested but have questions?** Don't hesitate to email [info@qvna.org](mailto:info@qvna.org) or call me in the office.

### **Recycling at Curbside: The list grows**

You can add one more item to those that can be put out to be recycled curbside. The City just expanded its recycling capabilities to include the waxy-looking containers for milk, juice, soups, broth, soy milk, wine, etc.

**An important reminder:** Plastic bags **cannot** be put out for curbside recycling. And don't put your recyclables in plastic bags. Waste Management Inc. reports that at its new sorting facility in Northeast Philadelphia, the machinery has to be shut down for 30 minutes every four hours so workers can clear the plastic-bag clogs. Recyclables should be put in hard plastic bins.



**OPEN HOUSE GRADES PK-12 THURSDAY APRIL 5**  
**8:45 AM JOINING QUAKER EDUCATION**  
**WITH ALL THE CITY HAS TO OFFER 17TH & BENJAMIN**  
**FRANKLIN PARKWAY PHILADELPHIA**  
**215. 561. 5900 EXT 104 FRIENDS-SELECT.ORG**



**Plumer &  
Associates, Inc.  
Realtors**

# Plumer

Center City's largest  
independent Realtor.  
Serving Philadelphia since 1923.

**Residential,  
Commercial,  
and Investment  
Real Estate**

For a complete listing of Center City  
properties visit our website:  
[www.plumerre.com](http://www.plumerre.com)



226 South Street, Philadelphia  
[info@plumerre.com](mailto:info@plumerre.com)  
**215 922 4200**



3rd and Pine Streets  
215.925.5968  
www.stpetersphila.org

**Children welcome!**

*Children's Service*

9am For young children and parents  
A lively, music-filled Communion service  
St. Peter's School, 2<sup>nd</sup> floor

*Church School*

10am For pre-K through 6<sup>th</sup> Grade  
St. Peter's School, 1<sup>st</sup> floor

*Children's Choir*

A superlative music education for boys & girls 2<sup>nd</sup> through 12<sup>th</sup> grade



Open hearts. Open minds.



**CLASSIC:**

TIMELESS. ORIGINAL. VALUABLE.



A CLASSIC EDUCATION HAS ALWAYS BEEN about gaining the keys of knowledge to unlock any door. In short, access to the world. The difference at Penn Charter is that along with classic academic keys, we give students a Quaker moral compass to guide them and friends of all backgrounds with whom to travel and explore the world.

*re*INVENTING CLASSIC

Visit our 44-acre campus in Philadelphia's East Falls neighborhood. Reserve space online at [www.penncharter.com](http://www.penncharter.com) or phone our Admissions Office for more information 215.844.3460 ext. 103.

A Friends school for girls and boys, Pre-K to grade 12  
3000 West School House Lane | Philadelphia, PA 19144 | 215-844-3460 | [www.penncharter.com](http://www.penncharter.com)

**PHILLYLOVES**  
READING TERMINAL MARKET

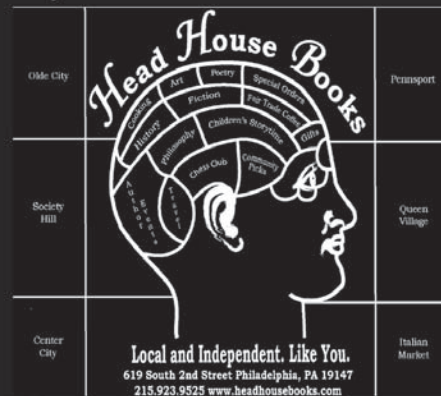


"The market is our small town in a big city."

—PETE, SARA, AND SIDNEY NICHOLAS,  
MARKET EAST, MARKET SHOPPERS SINCE 2010

**PARK FOR \$4** at 12th & Filbert garage with \$10 purchase and validation from any merchant. Limit 2 hours.

*Independent and Local. Like You.*

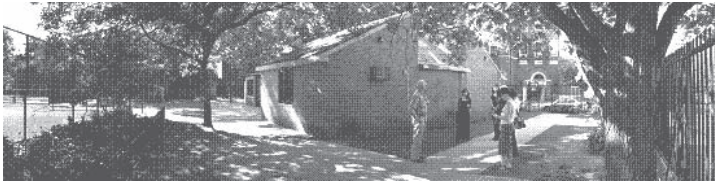


Local and Independent. Like You.  
619 South 2nd Street Philadelphia, PA 19147  
215.923.9525 [www.headhousebooks.com](http://www.headhousebooks.com)

**Voted Best Bookstore**  
by both Philadelphia Magazine and Philadelphia Style

"Walk into Queen Village's Head House Books on any given day and you may see something unusual: the store's owner handpicking inventory from a seller. That care isn't all that sets this independent bookstore apart. From the worn Persian rugs to the skylight that bathes the place in natural light, Head House Books has an earnest charm that chain stores seek to emulate but never seem to master."  
—Philadelphia Magazine August 2008

619 SOUTH SECOND STREET PHILADELPHIA PA 19147  
215.923.9525 [WWW.HEADHOUSEBOOKS.COM](http://WWW.HEADHOUSEBOOKS.COM)  
Monday 10-6 Tuesday-Thursday 10-7 Friday & Saturday 10-8 Sunday 11-5



### Weccacoe plans include obstacle course

One of the many plans the Friends of Weccacoe have incorporated into their design for the 2014 playground is an obstacle course on the West side of the building. Designed to create a play space in an area currently rarely used, it will engage our children's large muscle skills to develop balance, agility and perception.

You can help make this obstacle course a reality. Visit [www.weccacoe.org](http://www.weccacoe.org), and give your child a present with your donation. Help Fund the Future of Weccacoe.

Want to see the whole conceptual plan for the playground? Access our Facebook page from the QVNA web site.



### Update: Mario Lanza Dog Run

by Honey Pertnoy and Brent Chavis

The renovation is complete and the surface is doing quite well. The doggie water fountain is in operation, and the dogs and owners are quite happy about that! We will be draining it and shutting it off for the winter shortly, so the pipes will not freeze. If you see that it is not operating, please understand that it is to keep it in good working order for the spring.

We are now forming a group to help maintain the dog run and to take part in decisions regarding it. All interested should attend a meeting at 7:30 pm, January 26, at the QVNA office. If you use the run, please plan to attend. It is important for everyone to have a voice in the operation of the run, since we are all volunteers!

Lastly, we have set up a Mario Lanza dog run group on Facebook. The address is: [mariolanzadogrun@groups.facebook.com](https://www.facebook.com/mariolanzadogrun)

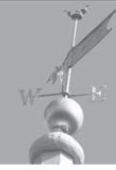
Please go to the site and join the group. We will have updates on the run, and you will be able to post ideas, concerns, and information for all to see. It is an open group, so anyone can join.

### Settlement Music School Concert

The Winter Orchestra Festival features all Settlement student orchestras including Trowbridge Chamber Orchestra, at 3 pm, Sunday, January 29, Mary Louise Curtis Branch of Settlement Music School, 416 Queen Street. FREE. For information, call 215-320-2600 or visit [www.smsmusic.org](http://www.smsmusic.org)

### Zoe Strauss Photo Exhibit at Art Museum

Local photographer Zoe Strauss, who "examines everyday life and the role of art in the modern city," is the subject of a major exhibition, "Zoe Strauss: Ten Years," that opens with a dance party on January 14 and runs until April 22 at the Philadelphia Museum of Art. The exhibition includes 170 prints and a selection of artist-created slideshows, one of which will be projected on the Museum's exterior façade during the exhibition's opening week. Information at [www.philamuseum.org](http://www.philamuseum.org)



# Gloria Dei

## (Old Swedes') Church

---

### All Are Welcome

### Sunday services of Holy Communion

### 9AM & 11AM

---


**At Gloria Dei Weekly:**  
 Yoga – Tuesdays, 6-7PM (beginners) and 7:15-8:15PM (advanced).  
 Tai Chi – Wednesdays, 10-11AM  
 (all levels welcome). \$8.00 participant.

---

**Upcoming Events:**  
 Bible Study – Four Wednesdays with the Gospel of Mark  
 beginning 1/18/12, 6-7PM.  
 Book Club – *Sarah's Key* by Tatiana de Rosnay – 1/23/12, 7PM.  
 Jazz & Joe – Enjoy live jazz with coffee and dessert –  
 1/26/12, 7:30PM.

---

Columbus Boulevard & Christian Street  
 (215) 389-1513

Find us on 

[www.old-swedes.org](http://www.old-swedes.org)

### 2,000 bags of trash off the streets Help QVNA clean up!

Since late 2003, QVNA has contracted with a local company, LRC Services, to pick up litter once a week on sidewalks and curbs for all the north-south streets between Bainbridge and Washington Avenue, including Moyamensing and Passyunk Avenues, from Front to the east side of 6th. LRC's litter pickup is about 2000 bags a year—approximately 31,000 pounds of litter.

QVNA spends \$15,000 a year for this weekly service, and we could use your help.

Contribute to a cleaner Queen Village with the coupon below.

#### Count me in; here's my contribution

— Individual \$25 — Family \$40 — Friend \$100 — Benefactor \$500

Name: \_\_\_\_\_

Address: \_\_\_\_\_

Phone: \_\_\_\_\_ Email: \_\_\_\_\_

Mail to or drop off, at QVNA, P.O. Box 63763, 19147m (Checks payable to QVNA)

Contributions may be tax deductible. QVNA Federal Tax ID # 23-2025152  
Consult your tax advisor

United Way Donor Choice helps QVNA, too!  
Designate Donor Choice #558  
on your United Way pledge form at work.



# EPIC

A JOURNEY THROUGH CHURCH HISTORY

CRUSADES · REFORMATION · INQUISITION · VATICAN II

Have a deeper understanding of the Story of the Church.

WEDNESDAY EVENINGS 7:00-8:30 P.M.  
STARTING JANUARY 11, 2012

All interested persons welcome.  
Late registrations accepted.

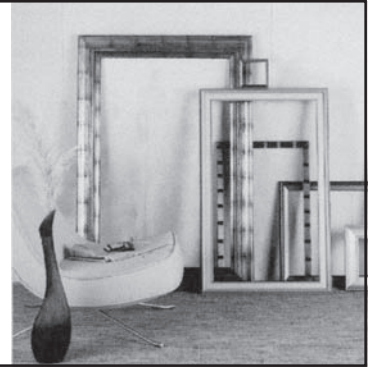


For more information on EPIC and other  
Celebrations and Parish Events during the year  
please visit [www.churchofstphilipneri.org](http://www.churchofstphilipneri.org)

## ST. PHILIP NERI PARISH

ST. PHILIP NERI CHURCH 218 QUEEN STREET  
ST. STANISLAUS CHURCH 242 FITZWATER STREET

trinity framing  
701 s. 3rd st.  
215.351.1600



Bill Grubb · Joe Carter · Jason Katz

610-649-4500 office  
610-220-6203 direct  
Bill.Grubb@prufoxroach.com  
grubbteam.com

For Free Market Snapshot  
of House Values go to  
BestPhillyHomeValues.com



Fox & Roach,  
REALTORS®

An Independently Owned and Operated Member of the Prudential Real Estate Affiliates, Inc.

# At last! A great neighborhood bar on South Street!

## Wine, Beer & Artisanal Cocktail Lounge opening this fall between Copa & TLA.

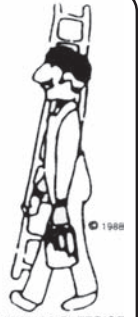
May we bring some color to your home or office?

R. CHOBERT  
PAINTING & PAPERHANGING

641 Reed Street, Philadelphia

(215) 389-7788

CREATING BEAUTY SINCE 1967  
Pa License #PA031988



INTERIOR/EXTERIOR

Establishing the foundation for a fruitful, principled life.



Academic Excellence since 1834

Plan a visit for your family soon.

St. Peter's School  
319 Lombard Street  
Philadelphia, PA 19147  
215-925-3963  
[st-peters-school.org](http://st-peters-school.org)

Get Wisdom.  
Get Understanding.



# Kathy, Patrick and the Conway Team

www.conwayteam.com

Kathy, Patrick & Our Entire Team Sincerely Thank you for Another Great Year.

**WALL STREET JOURNAL & REAL TRENDS Magazine** recently named Kathy, Patrick & The Conway Team as one of the Top 250 Teams in the U.S.A.

January 2012

90% of our business comes from friends telling friends!



*Wishing all a Happy, Healthy and Peaceful New Year!*

*Thank You For Another great Year!*

Visit our website [www.conwayteam.com](http://www.conwayteam.com) for complete inventory, weekly open houses, professional pictures and more particulars.

**New Listings**



**1514 E. Moyamensing**  
Lg, Extra Wide 20x77  
Corner Property, 3/2.5,  
Hrwd Flrs, 2 Fp's, Dk, Grdn  
& Garage. \$414,999



**2001 Catharine St**  
Wond Corner Property  
2700 Sq Ft, 3+Den/2.5,  
Fp, Fin Bsmt, Deck,  
Garden & Garage  
\$625,000



**2107 Bainbridge St**  
A True WOW House  
2700 Sq Ft, 3+Media, 2.5  
Spa Ba, Fp, Hrwd Flrs, Fab  
Kit, Lg Dk & Garden  
RED \$669,000



**For Rent**  
**228 W. Washington Sq**  
NY Upper East Side  
Lifestyle at Phila Prices!  
Cosmopolitan Classic  
Directly on Washington Sq  
With Parking. \$8500



**206 Gaskill St**  
Award Winning  
Liberty Court, 2900 Sq Ft  
4+Den/2.5, Fp, 3 Dks,  
Garden & Garage  
\$1,199,000



**512-16 S. Front thru to  
110-112 Naudain**  
Investment Opportunity  
Commercial- 7820 Sq Ft  
River Views  
Terrific Space & Location  
\$1,900,000



**719 S. Philip St**  
Great House w/ Deeded  
Prkng, 3+Sitting Rm/2.5,  
Hrwd Flrs., Fp, Private Dk  
& Garden  
\$575,000



**720 S. Front St**  
River Views! Truly a Jewel  
w/ a true Roof Garden,  
2+Den, Great Kit & Bath +  
Garden. RED \$365,000



**113 N. Bread 2B**  
A.K.A. 130 N. 2nd St  
**The National**  
Terrific Designer Unit,  
3/2, Hrwd Flrs, Dk & Prkg.  
Red \$449,000



**624 Kenilworth St**  
Great House w/ deeded  
Prkg, 3+Den/2 1/4, Fp, Lg  
Garden  
Meredith School District  
RED \$479,000



**963 N. American St**  
Incredible Home  
2500 Sq Ft, 3/2.5,  
Bamboo Flrs t/o, Fin Bsmt  
& Dk  
\$499,000



**852 S. Front St**  
Large 4 BR/2 BA Hm + a  
Bonus 2 Story Shell in  
Rear.  
RED \$399,900



**830 S. 2nd "A"**  
Magnificent Gated CY Hm  
w/ Prkg, 4+Den & Fam  
Rm, Hrwd Flrs, 2 Fp's, 2  
Balconies, Lg Roof Dk +  
Garden. RED \$779,000



**113 N. Bread 7F**  
A.K.A 130 N. 2nd St  
**The National**  
1000 Sq Ft, Great Unit w/  
Terrific Views, 2/2, Balcony  
& Prkg. RED \$473,000



**795 S. 3rd St**  
Corner Property w/ Dimitri's  
Restaurant as 1st Fl tenant  
+ two lrg 1 BR Apts  
\$599,000



**812 S. Howard St**  
Great Total Rehab  
2 BR, Fp, Hrwd Flrs t/o,  
Garden,  
Meredith School District  
\$299,900



**111 Federal**  
Terrific N/C, 3+Den/2.5  
Bth, Bsmt, 2 Dks, Garden,  
Garage + TA  
\$499,000



**725 Kimball St**  
Terrific 3 Bedroom Home  
w/ Hrwd Flrs & CA  
RED \$339,000



**125 Kenilworth**  
2.5 story Historically  
Certified  
Circa 1760, 3 BR  
Fp & Lrg. Garden  
RED \$334,900



**1905 E. Moyamensing**  
A rare find! Porch front hm  
w/ 4 bdrms, hrwd flrs, high  
ceilings & nice yard.  
RED \$239,900



**822 Swanson**  
Single family currently  
used as duplex. 3 total  
bdrms, 3 full & 1 half bth,  
wd flrs & 2 decks. RED  
\$439,900

**The Award Winning Kathy, Patrick and the Conway Team**



Deidre Quinn



Ivon Cowell



Adele Gemrgoss



Mike Carestio



Rosa Marino



Kathy, Patrick & The Conway Team are pleased to announce that Gary Mintz has joined our Team. Gary, his Wife Alejandra and his 3 beautiful girls Isabella, Sabrina & Gabriela have lived in Queen Village for the past 12 years.

Main: 215-627-6005

Direct: 215-440-8190

Kathy@conwayteam.com

Patrick@conwayteam.com



**Prudential**

Fox & Roach REALTORS

530 Walnut St. #260  
Philadelphia, PA 19106

[www.conwayteam.com](http://www.conwayteam.com)

Independently owned and operated member of the Prudential Real Estate Affiliates, Inc.